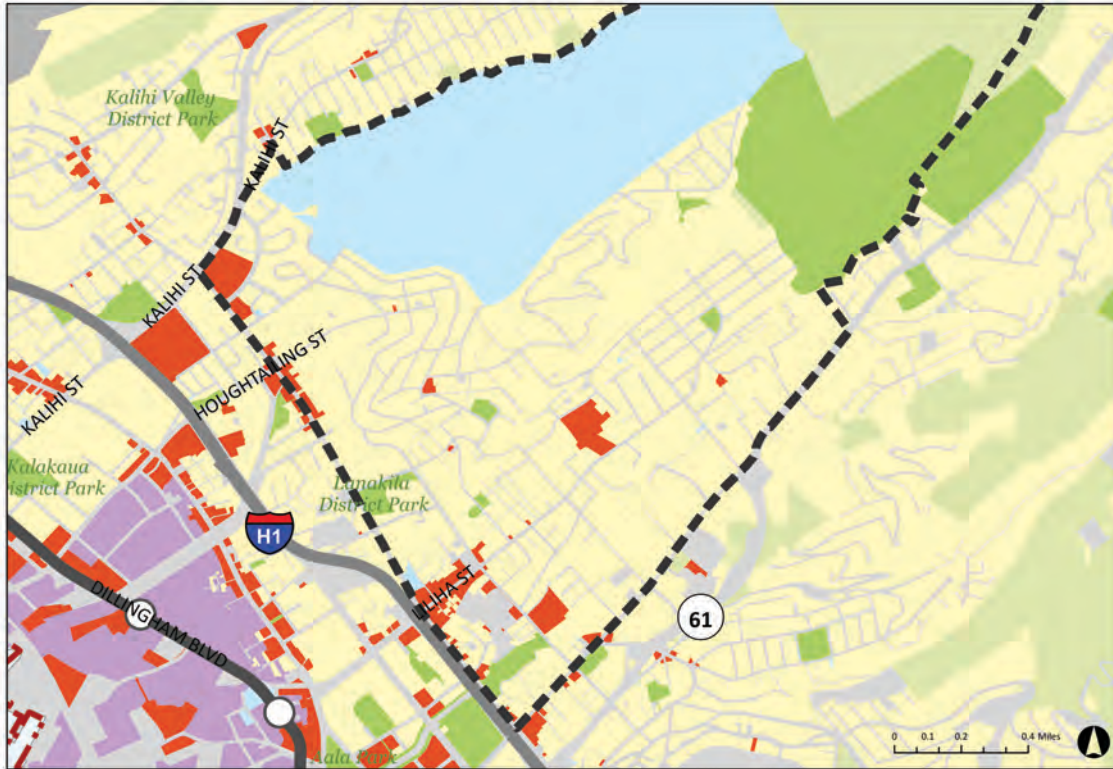


LILIHA-ALEWA

EXISTING LAND USE



	Acres	%
Residential	627	35
Commercial	51	3
Industrial	2	0
Public	489	27
Resort	1	0
Open Space	190	11
Preservation	385	22
Military	0	0

(excludes rights of way and vacant/unknown)

QUICK FACTS

TOTAL AREA (ACRES)

1,966

3% of total in PUC

TOTAL URBANIZED AREA

1,582

4% of total in PUC

TOTAL POPULATION

24,082

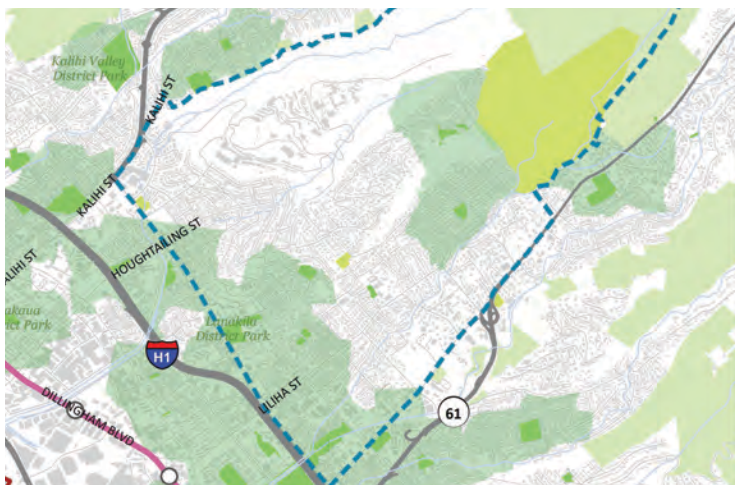
5% of total in PUC

TOTAL HOUSING UNITS

7,317

4% of total in PUC

ACCESS TO PARKS



29% of households are located within a 1/4 mile walk of a park

PARK LEVEL OF SERVICE



TOTAL PARK ACRES

21

O'AHU'S
GATHERING PLACE



DEMOGRAPHICS

POPULATION DENSITY

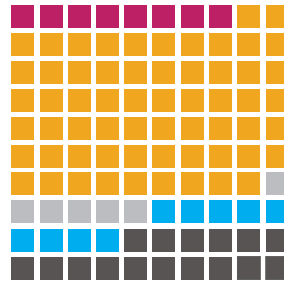
9,746

persons/sq mi



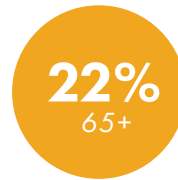
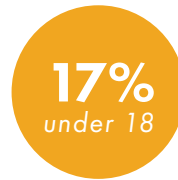
- 0-6000 persons/sq mi
- 25001-75000 persons/sq mi
- 6001-12000 persons/sq mi
- 75001+ persons/sq mi
- 12001-25000 persons/sq mi

RACE/ETHNICITY



- White (8%)
- Black (0%)
- Asian (61%)
- Hispanic/Latino (6%)
- Native Hawaiian/Pacific Islander (9%)
- Two or more races (16%)

AGE



PUC: 18%

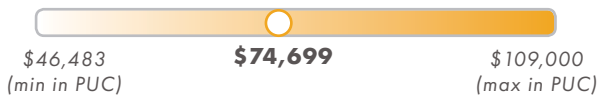
PUC: 18%

HOUSING

MEDIAN GROSS RENT



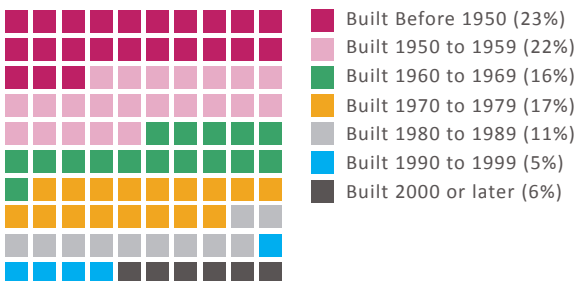
MEDIAN INCOME



VACANT HOUSING

7% of households are vacant (PUC: 11%)

YEAR BUILT



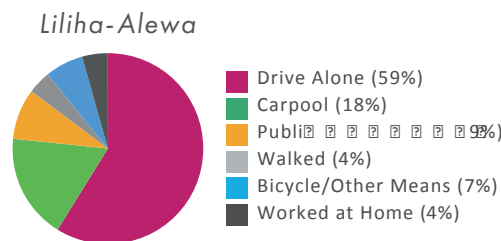
Average of year built: 1972 (PUC: 1971)

Data Source: 2010 US Census, 2016 ACS, City & County of Honolulu GIS Services

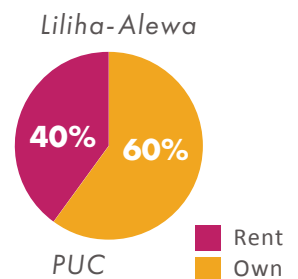
AVERAGE HOUSEHOLD SIZE



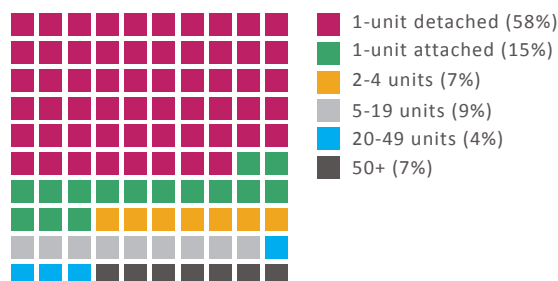
COMMUTING MODE



OWNER/RENTER



UNITS BY TYPE OF BUILDING



O'AHU'S
GATHERING PLACE

